

Ten tumors in the testing data

Purpose of this document

A total of ten tumors from six liver cancer patients are used in our testing data. Each patient may have one or more tumors manually segmented by the participating radiologists. However, not all the identified tumors are included in our reference segmentation. To facilitate the testing of your segmentation algorithms and evaluation on our side, we provide representative images that show the location of each tumor in the testing data.

Please save your segmentation of each tumor in different files using the patient ID and tumor index given below. For example, the segmentation of tumor #1 and tumor #2 in patient "LTS_IMG05" should be saved as "LTS_IMG05_L1.raw" and "LTS_IMG05_L2.raw" respectively.

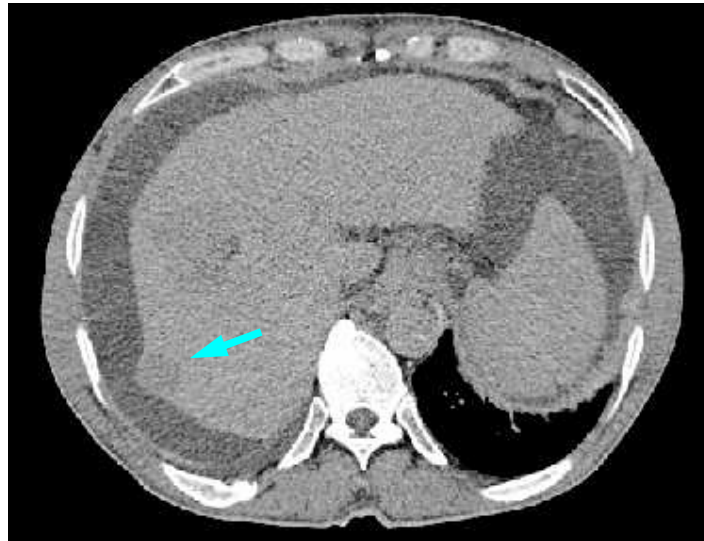
More details about the format of segmentation results can be found at our liver tumor segmentation competition website <http://lts08.bigr.nl>.

Representative images

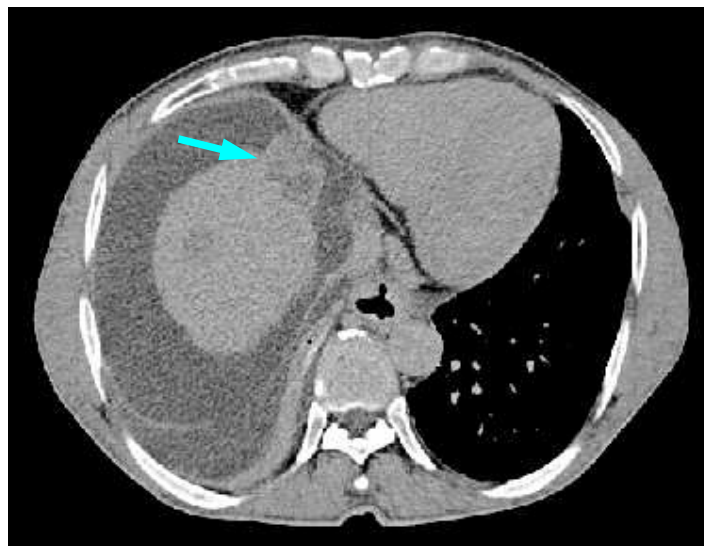
1. LTS_IMG05



LTS_IMG05, Tumor #1



LTS_IMG05, Tumor #2

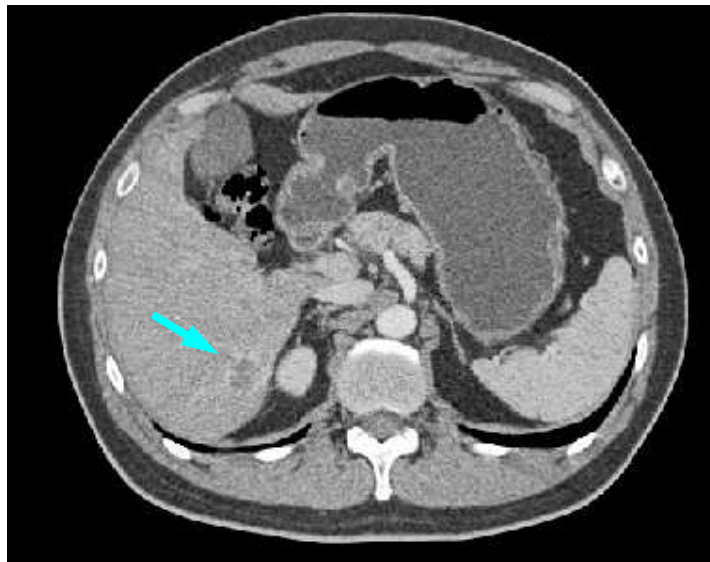


LTS_IMG05, Tumor #3

2. LTS_IMG06

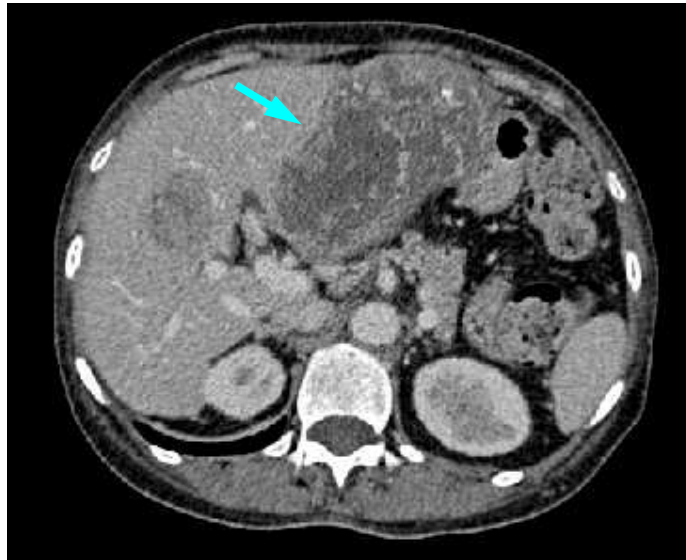


LTS_IMG06, Tumor #1



LTS_IMG06, Tumor #2

3. LTS_IMG07

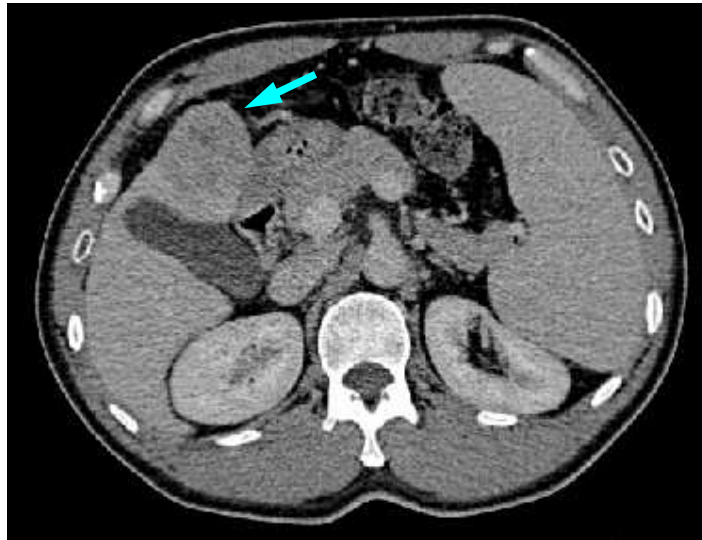


LTS_IMG07, Tumor #1



LTS_IMG07, Tumor #2

4. LTS_IMG08



LTS_IMG08, Tumor #1

5. LTS_IMG09



LTS_IMG09, Tumor #1

6. LTS_IMG10



LTS_IMG10, Tumor #1